



Harbor-UCLA Chapter of the
National Management Association



“Developing the Leader in You”

President’s Message

9/21/08

Welcome new Members!

Hello everyone! We have a full schedule of events planned for the rest of this year. Our New Member Luncheon will be October 7th at noon in the Assembly Room. I sincerely hope that you are able to attend and help us greet and recognize the new members of our Harbor-UCLA NMA Chapter. We are thrilled to have 19 new members this year!

On November 4th, be sure and join us for our noon Program Meeting to hear Lynn Woodhouse speak about working with different generations in the workplace ... how it affects us all and how to cope.

Be sure and look for a special Holiday Celebration meeting which will take place on Tuesday, December 2nd at noon in the Assembly Room. This is always a really enjoyable event for our members! In previous years, we’ve sponsored toy and food drives, and have adopted a family to provide holiday dinner and gifts. More details to follow.

A special goodbye to our good friend and loyal supporter Ken Trevett as he and his wonderful wife, Barbara, journey off to Texas. We will miss him dearly and wish them both much happiness and the very best of everything in their new adventure!

All of us on the board want to encourage members to let us know of any ideas you may have about noon program meetings and professional development events for the coming year. We sincerely want to provide you with meaningful events.

Looking forward to seeing you all at upcoming events!



Bill Warren, President



Speaking from the Right-Side of your Brain

This month's National Management Association's noon luncheon featured Don Johnson, a professional speaking consultant and a Toastmaster International World Champion of Public Speaking. Mr. Johnson shared some of his techniques for public speaking. It was an enjoyable hour, and we were delighted that he was able to return on September 23rd to provide further tips.

Participants of the luncheon left with ideas and practical application exercises to help expand their comfort zones, and become at ease in front of an audience. The two hour follow-up professional development program, combined theory with practical application exercises.

Some exciting tips included:

- Right brain/left brain applications
- Body language tips
- How to use words and non verbal communication to paint a clear picture
- What to do and what not to do with your hands when you are speaking

All audience members participated in various exercises and had fun while learning. Among the exercises were: relaxation techniques, reading aloud, and improvisation.



Mr. Johnson generously provided each attendee to the two-hour session, his book entitled: "Would you Like to Swing on a Star? How you can create, prepare and deliver a winning speech".

Many thanks go out to Don Johnson!



Quotable Quotes

The vision is really about empowering workers, giving them all the information about what's going on so they can do a lot more than they've done in the past.

-- Bill Gates, cofounder of Microsoft

Don't Miss:

**HARBOR-UCLA MEDICAL CENTER
CHAPTER OF THE
NATIONAL MANAGEMENT ASSOCIATION**

**NEW MEMBERS'
LUNCHEON**

**Tuesday, October 7, 2008
12:00 noon—1:00 p.m.**

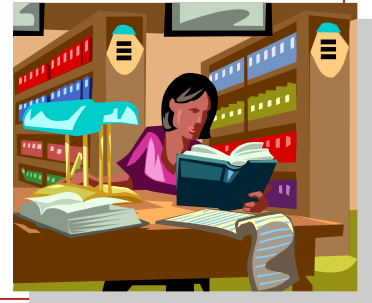
HOSPITAL ASSEMBLY ROOM

**Everyone who donates books or
magazines can participate in the raffle!**

Did you know...

There is a “Management Reference” section in the Parlow Library. The NMA has provided \$1,000 worth of management books and CDs for your review.

Go check it out on the second floor – Section HD



Statement of Principles

NMA is dedicated to managerial excellence, personal and professional growth, and leadership development. The following principles identify NMA’s core beliefs and provide the basis for the Association’s Mission Statement.

- *We believe in the highest standards of personal and organizational integrity and respect for the individual.*
- *We believe in lifelong learning, continuous improvement, and the development of a workforce capable of sustaining a competitive posture in the global economy.*
- *We believe management is a creative, dynamic, and essential process enabling people to achieve personal and organizational objectives.*
- *We believe that managerial responsibility is shared among all individuals at all levels of the organization and that leadership is critical to management success.*
- *We believe that individuals and organizations have a community and civic responsibility.*



The NMA Leadership Model



**NMA Fiscal Year 2008/2009
Board of Directors**



Bill Warren
President

Claudia Alarcon & Dawn Flores
Second Vice President: Co-Chair /
Professional Development

Bernice Hill-Shepherd
Corresponding Secretary

Eileen Mosler
Membership Secretary

Kevin Crawford
Treasurer

Annie McCary
Editor

Susan Butler
Assistant to the Editor

Pam Shea
Booster Chairperson

Jim Keen
Ways and Means

Cynthia Moore-Oliver & Calvin Kwan
Past Presidents

Members at Large:

Susan Butler
Dana Denis
Stewart Laidlaw
Nettie Nelms
Shirley Smith

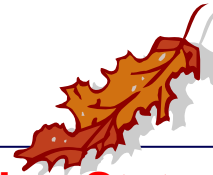
Contributions to the Newsletter?

All submissions must be received by the 15th of the month for publication in that month's newsletter.

Contact: Annie McCary, Editor
Phone: 310-781-36482
E-mail: amccary@labiomed.org

Mission Statement

The mission of the NMA is to provide management and leadership development opportunities and related chapter activities which meet the needs of the members and contribute to the effectiveness of sponsoring organizations.



Vision Statement

NMA is the recognized worldwide partnership of people and businesses inspiring outstanding leadership, and cultivating highly productive workplaces.

402 Harbor-UCLA Medical Center Chapter

Harbor-UCLA Medical Center
1000 West Carson Street
Torrance, CA 90509



Phone: 310-222-8284
Contact: Eileen Mosler,
Membership Secretary
E-mail: emosler@labiomed.org
Website: www.nma1.org